

# 46 WHYTELADYES LANE COOKHAM



■ AUCTIONEERS ■  
■ SURVEYORS ■  
PIKE  
&  
SMITH  
KEMP  
■ VALUERS ■  
■ ESTATE AGENTS ■



## **46 WHYTELADYES LANE, COOKHAM, SL6 9LP**

46 Whyteladies Lane is a tastefully remodelled and beautifully presented 3 bedroom end of terraced family home. It is ideally located within short walking distance of many local amenities including the highly regarded Cookham Rise Primary School and numerous shops, cafes & restaurants. Cookham train station is also a short walk, which connects to Maidenhead, providing a fast service to London Paddington (including the newly opened Elizabeth Line with direct access to Bond Street, Tottenham Court Road, Farringdon, Liverpool Street and Canary Wharf). Glorious countryside walks and the River Thames are nearby, together with many sporting facilities including cricket club, sailing club and golf club and the nearby Odney Club (John Lewis Members Club, which is open to Cookham Residents for an annual fee). Heathrow, the M40, M4 & M25 are also within easy reach.

**ENTRANCE HALL : DOWNSTAIRS CLOAKROOM  
LARGE LIVING ROOM  
STYLISHLY RE-MODELLED KITCHEN / DINER  
UNDERFLOOR HEATING TO HARDFLOOR AREAS TO GROUND FLOOR  
BESPOKE WOODEN BLINDS THROUGHOUT  
MASTER BEDROOM WITH FITTED WARDROBES  
2 FURTHER BEDROOMS  
REFITTED FAMILY BATHROOM**

**EPC : C COUNCIL TAX BAND: D**

**GUIDE PRICE : £475,000 FREEHOLD**



**PIKE SMITH & KEMP**  
Lower Road, Cookham  
Berkshire, SL6 9EH

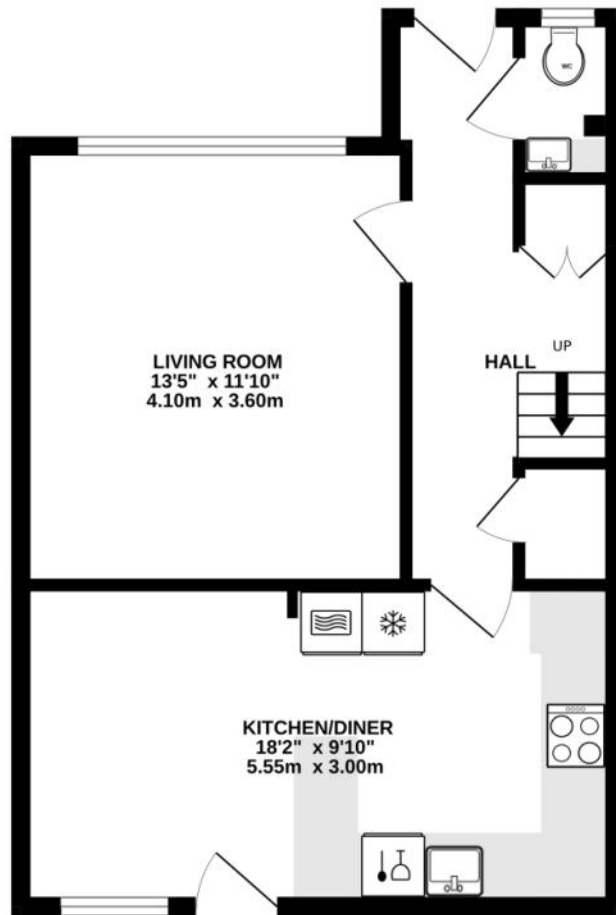
[cookham@pikesmithkemp.co.uk](mailto:cookham@pikesmithkemp.co.uk)  
01628 532010  
[www.pskweb.co.uk](http://www.pskweb.co.uk)



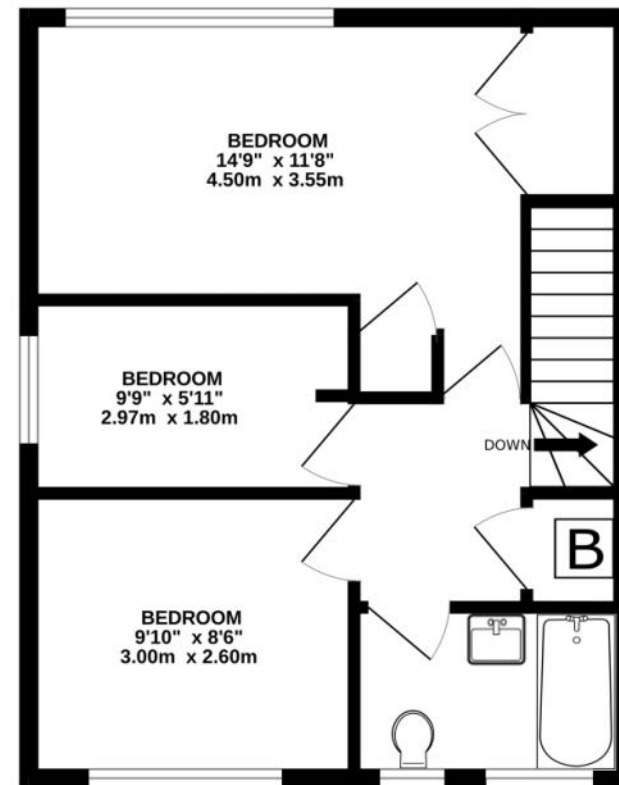
■ AUCTIONEERS ■  
P I K E  
S M I T H  
K E M P  
■ SURVEYORS ■  
■ VALUERS ■  
ESTATE AGENTS ■



GROUND FLOOR  
451 sq.ft. (41.9 sq.m.) approx.



1ST FLOOR  
426 sq.ft. (39.6 sq.m.) approx.



**Directions:** From our office in Lower Road proceed towards Cookham Dean, take the left hand turning Into Whyteladyes Lane, just before open farmland, passing the cricket club on the right hand side. Number 46 will be found towards the end of the road on the left hand side.

TOTAL FLOOR AREA : 877 sq.ft. (81.5 sq.m.) approx.

Whilst every attempt has been made to ensure the accuracy of the floorplan contained here, measurements of doors, windows, rooms and any other items are approximate and no responsibility is taken for any error, omission or mis-statement. This plan is for illustrative purposes only and should be used as such by any prospective purchaser. The services, systems and appliances shown have not been tested and no guarantee as to their operability or efficiency can be given.

Made with Metropix ©2024





■ AUCTIONEERS ■  
PIKE SMITH & KEMP  
■ SURVEYORS ■  
■ ESTATE AGENTS ■





